

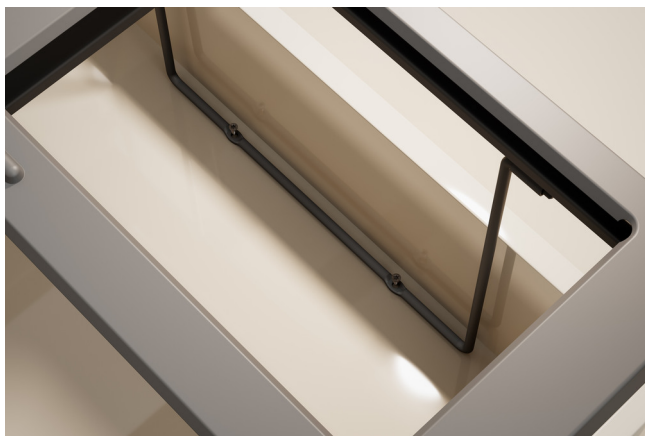
# SLIDE ALL

## Assembly instruction

Mounted on drawer bottom and front.



- 1.** Place the frame in the drawer. Make sure that it is centered so that the drawer can be closed.



- 3.** Attach the frame on the bottom of the drawer with 2 screws.



- 2.** Make sure that the frame is straight. Attach it to the front with 4 screws.



- 4.** Slide the lid into the cabinet.



- 5.** Insert bins, lid and divider.



- 6.** Slide the lid back.